



MODEL YAMAHA YZF 1000 R1

YEAR 2009 -->

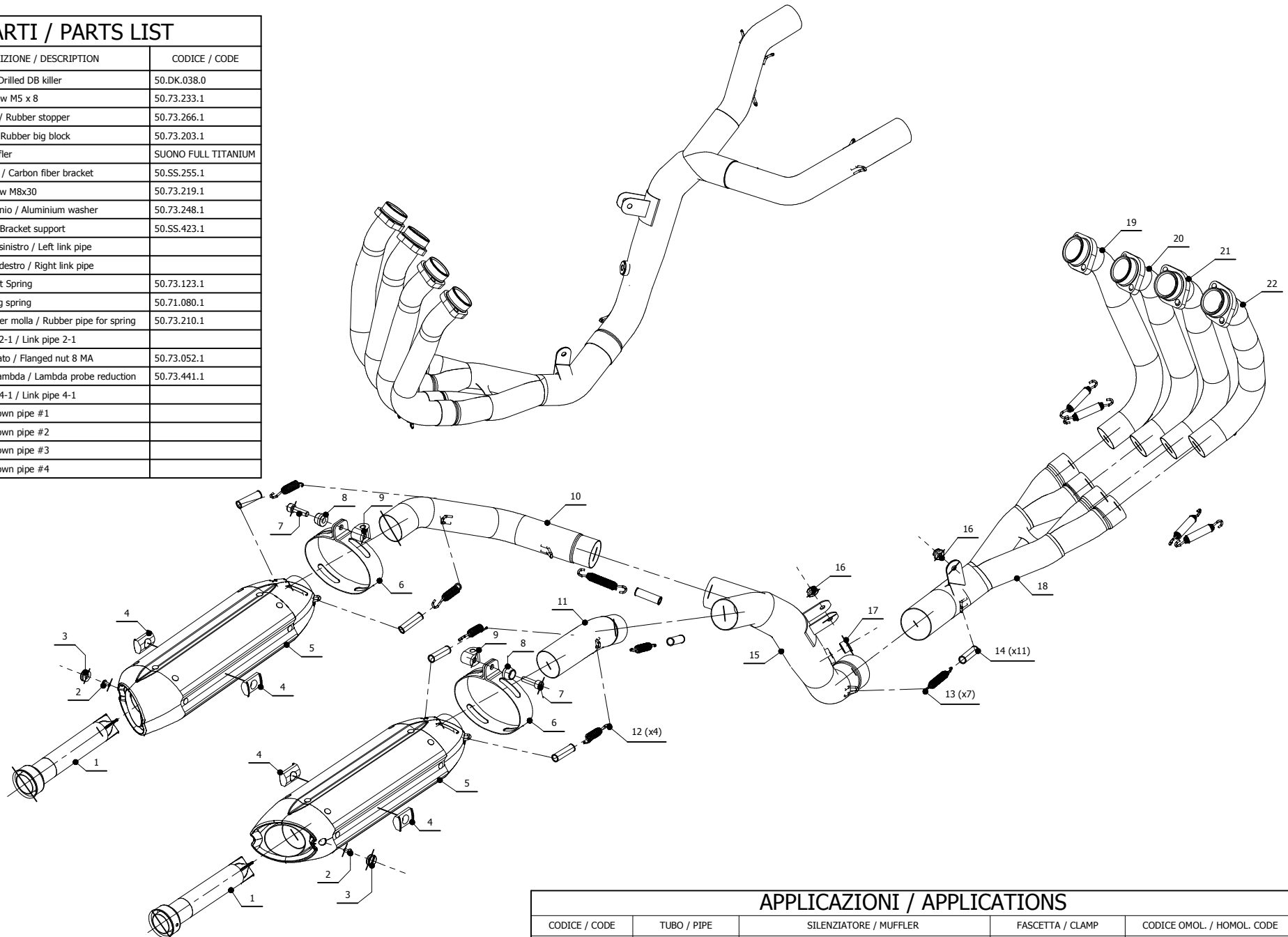
LINE POWER EVO

MUFFLER SUONO FULL TITANIUM

SCHEMATIC

ELENCO PARTI / PARTS LIST

#	QTÀ / QTY	DESCRIZIONE / DESCRIPTION	CODICE / CODE
1	2	Db Killer forato / Drilled DB killer	50.DK.038.0
2	2	Vite M5 x 8 / Screw M5 x 8	50.73.233.1
3	2	Tappo in gomma / Rubber stopper	50.73.266.1
4	4	Tassello grande / Rubber big block	50.73.203.1
5	2	Silenziatore / Muffler	SUONO FULL TITANIUM
6	2	Staffa in carbonio / Carbon fiber bracket	50.SS.255.1
7	2	Vite M8x30 / Screw M8x30	50.73.219.1
8	2	Rondella in alluminio / Aluminium washer	50.73.248.1
9	2	Sostegno staffa / Bracket support	50.SS.423.1
10	1	Tubo di raccordo sinistro / Left link pipe	
11	1	Tubo di raccordo destro / Right link pipe	
12	4	Molla corta / Short Spring	50.73.123.1
13	7	Molla lunga / Long spring	50.71.080.1
14	11	Tubo in gomma per molla / Rubber pipe for spring	50.73.210.1
15	1	Tubo di raccordo 2-1 / Link pipe 2-1	
16	2	Dado 8 MA flangiato / Flanged nut 8 MA	50.73.052.1
17	1	Riduttore sonda lambda / Lambda probe reduction	50.73.441.1
18	1	Tubo di raccordo 4-1 / Link pipe 4-1	
19	1	Collettore #1 / Down pipe #1	
20	1	Collettore #2 / Down pipe #2	
21	1	Collettore #3 / Down pipe #3	
22	1	Collettore #4 / Down pipe #4	



APPLICAZIONI / APPLICATIONS

CODICE / CODE	TUBO / PIPE	SILENZIATORE / MUFFLER	FASCETTA / CLAMP	CODICE OMOL. / HOMOL. CODE
00.R.YA.0004.S8	TITANIO / TITANIUM	CARBONIO E TITANIO / CARBON FIBER AND TITANIUM	CARBONIO / CARBON FIBER	---