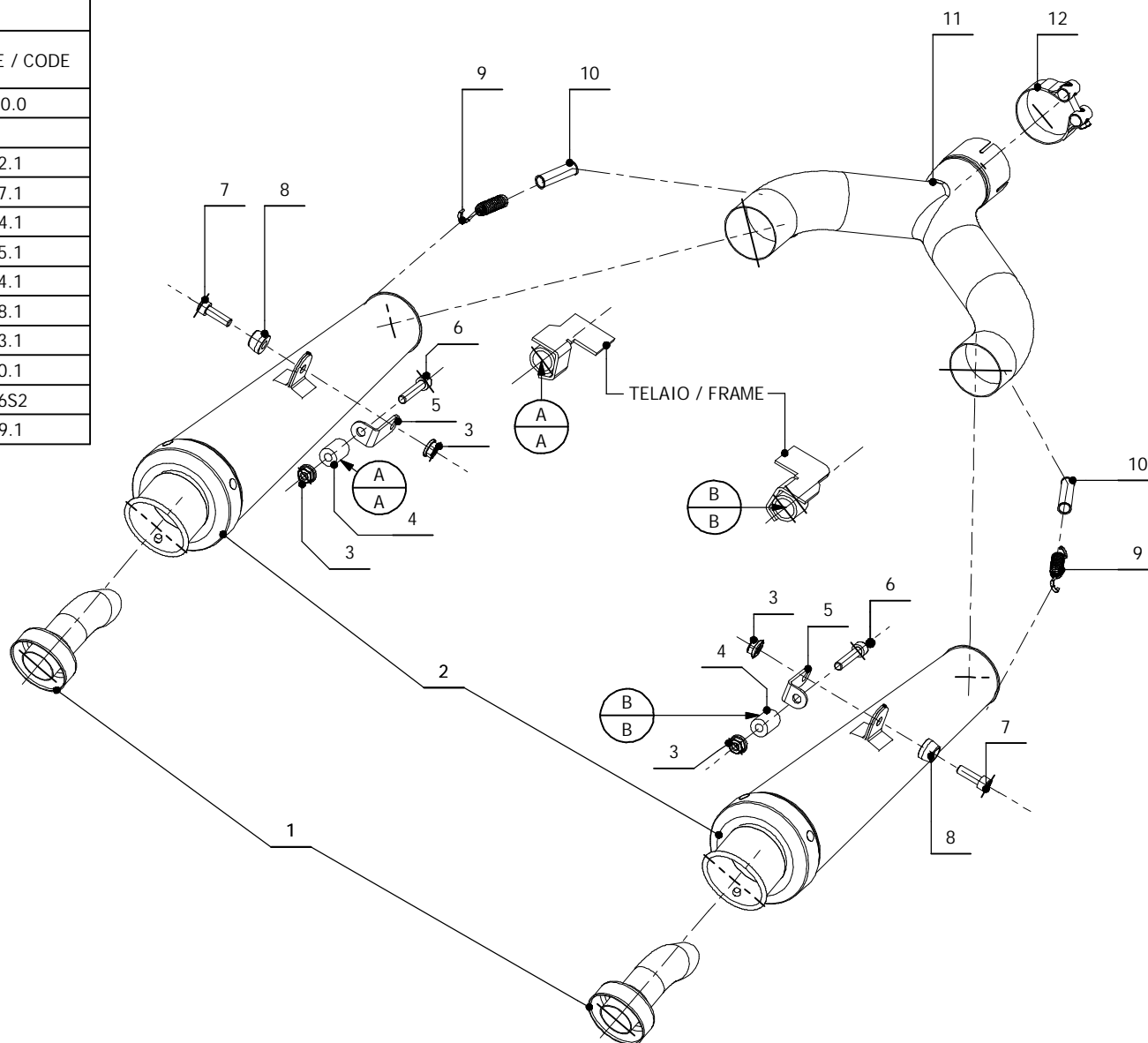


**ELENCO PARTI / PARTS LIST**

#	QTA / QTY	DESCRIZIONE / DESCRIPTION	CODICE / CODE
1	2	DB killer / DB killer	50.DK.020.0
2	2	Silenziatore / Muffler	X-cone
3	4	Dado 8 MA flangiato / Flanged nut 8 MA	50.73.052.1
4	2	Bussola in gomma / Rubber block	50.73.257.1
5	2	Staffa / Bracket	50.SS.244.1
6	2	Vite M8x40 / Screw M8x40	50.73.075.1
7	2	Vite M8x25 / Screw M8x25	50.73.064.1
8	2	Rondella in alluminio / Aluminium washer	50.73.248.1
9	2	Molla / Spring	50.73.123.1
10	2	Tubo in gomma per molla / Rubber pipe for spring	50.73.210.1
11	1	Tubo di raccordo / Link pipe	9773A006S2
12	1	Fascetta Ø 55/59mm / Pipe clamp Ø 55/59mm	50.FA.009.1


**APPLICAZIONI / APPLICATIONS**

CODICE / CODE	TUBO / PIPE	SILENZIATORE / MUFFLER	FASCETTA / CLAMP	OMOLOGAZIONE / HOMOLOGATION
A.006.LC3	INOX / STAINLESS STEEL	INOX / STAINLESS STEEL	INOX / STAINLESS STEEL	OMOLOGATO / HOMOLOGATED