

FISSAGGIO PONTE  
BRIDGE FIXING  
FIXAGE DU PONT  
BRÜCKE FIXIEREN  
FIJACION PUENTE

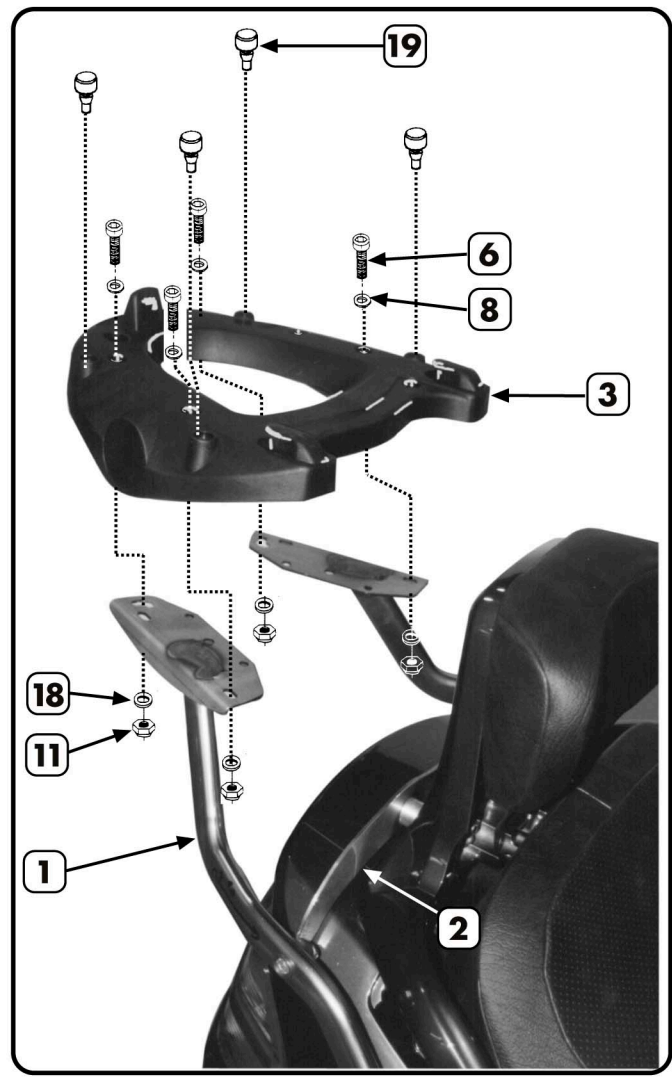
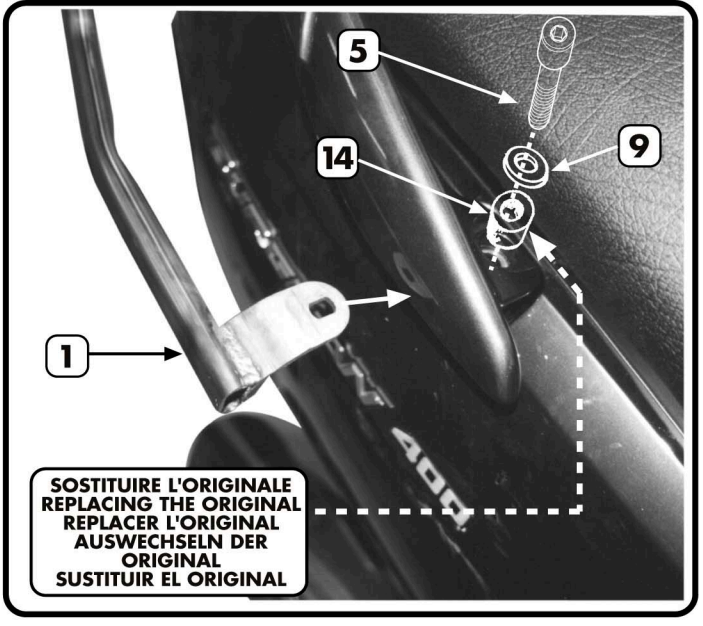
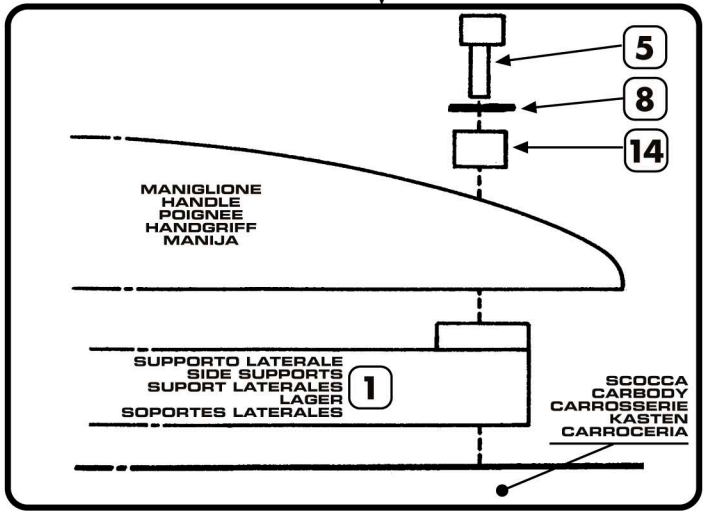
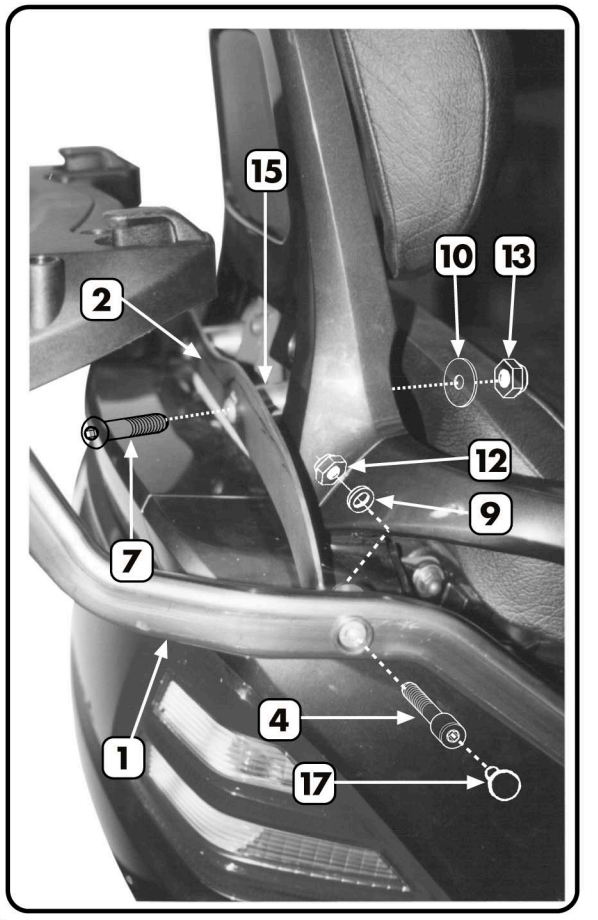
FISSAGGIO LATERALE  
SIDE FIXING  
FIXAGE LATERAL  
SEITLICH FIXIEREN  
FIJACION LATERAL

SR112 - KR112

PORTAVALIGIA SPECIFICO - SPECIFIC CASE HOLDER  
PORTE-VALISE SPECIFIQUE - SPEZIFISCHER KOFFER-TRÄGER  
PORTA-EQUIPAJE ESPECIFICO

# SUZUKI BURGMAN 250/400 BUSINESS

ISTRUZIONI DI MONTAGGIO - MOUNTING INSTRUCTIONS  
INSTRUCCIONES DE MONTAJE - BAUANLEITUNG - INSTRUCCIONES DE MONTAJE



PORTAVALIGIA SPECIFICO - SPECIFIC CASE HOLDER  
 PORTE-VALISE SPECIFIQUE - SPEZIFISCHER KOFFER-TRÄGER  
 PORTA-EQUIPAJE ESPECIFICO

# SUZUKI BURGMAN 250/400 BUSINESS

ISTRUZIONI DI MONTAGGIO - MOUNTING INSTRUCTIONS  
 INSTRUCTIONS DE MONTAGE - BAUANLEITUNG - INSTRUCCIONES DE MONTAJE

1



**SUPPORTI LATERALI**  
 SIDE SUPPORTS  
 SUPPORT LATERALES  
 LAGER  
 SOPORTES LATERALES

Q.TY n.2 dx-sx

2



**PONTE POSTERIORE**  
 REAR BRIDGE  
 PONT POSTERIEUR  
 BRÜCKE  
 PUENTE POSTERIOR

Q.TY n.1

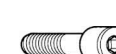
3



**PIASTRA Z622**  
 Z622 PLATE  
 PLATINE Z622  
 PLATTE Z622  
 PLETINA Z622

Q.TY n.1

4



**VITE TCEI M8x25**  
 SCREW M8x25  
 VIS M8x25  
 SCHRAUBE M8x25  
 TORNILLO M8x25

Q.TY n.2

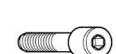
5



**VITE TCEI M8x30**  
 SCREW M8x30  
 VIS M8x30  
 SCHRAUBE M8x30  
 TORNILLO M8x30

Q.TY n.2

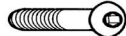
6



**VITE TCEI M6x25**  
 SCREW M6x25  
 VIS M6x25  
 SCHRAUBE M6x25  
 TORNILLO M6x25

Q.TY n.4

7



**VITE TBEI M8x60**  
 SCREW M8x60  
 VIS M8x60  
 SCHRAUBE M8x60  
 TORNILLO M8x60

Q.TY n.2

8



**RONDELLA Ø6**  
 WASHER Ø6  
 RONDELLE Ø6  
 SCHEIBE Ø6  
 ARANDELA Ø6

Q.TY n.4

9



**RONDELLA Ø8**  
 WASHER Ø8  
 RONDELLE Ø8  
 SCHEIBE Ø8  
 ARANDELA Ø8

Q.TY n.4

10



**RONDELLA Ø24  
 foro Ø9**  
 WASHER 24 Ø9  
 RONDELLE 24 Ø9  
 SCHEIBE 24 Ø9  
 ARANDELA 24 Ø9

Q.TY n.2

11



**DADO A.B. M6**  
 M6 BOLT  
 ECROU M6  
 MUTTER M6  
 TUERCA M8

Q.TY n.4

12



**DADO A.B. M8**  
 M8 BOLT  
 ECROU M8  
 MUTTER M8  
 TUERCA M8

Q.TY n.2

13



**DADO A.B. M8 rib.**  
 M8 BOLT  
 ECROU M8  
 MUTTER M8  
 TUERCA M8 REBAJADO

Q.TY n.2

14



**V418**  
**DISTANZIALE 12x10  
 foro Ø8,5**  
 SPACER  
 ENTRETOISE  
 DISTANZSTÜCK  
 DISTANCIADOR

Q.TY n.2

15



**V419**  
**DISTANZIALE 22x45  
 rib. 11,5x10 Ø8,5**  
 SPACER  
 ENTRETOISE  
 DISTANZSTÜCK  
 DISTANCIADOR

Q.TY n.2

16



**Z621**  
**COPRIFORO**  
 HOLE CAP  
 CACHE TROU  
 STOPSLÖCH  
 TAPA AGUJERO

Q.TY n.6

**-FORARE IL COPERCHIO IN PLASTICA NEI PUNTI PREMARCATI**

**-TO DRILL THE PLASTIC CAP IN THE MARKED POINTS**

**-PERCER LE COUVERCLE EN PLASTIQUE OU EST MARQUE'**

**-DEN DECKEL AUS PLASTIC IN DEN GEZEICHNETEN PUNKTE LOCHEN**

**-TALADRAR LA TAPA DE PLASTICO EN LOS PUNTOS MARCADOS**

17



**COPRIVITE Z801**  
 SCREW CAP  
 CACHE VIS  
 SCHRAUBE STOPSEL  
 TAPILLOS TORNILLOS

Q.TY n.2

18



**RONDELLA 16 Ø6**  
 WASHER  
 RONDELLE  
 SCHEIBE  
 ARANDELA

Q.TY n.4

19



**GOMMINI Z126**  
 RUBBER  
 CAOUTCHOUC  
 GUMMI  
 GOMA

Q.TY n.4

20



**Z 872**  
**TAPPO ANTIFURTO**  
 ANTI-THFT CAP  
 BOUCHON ANTIVOL  
 ANTI-DIEBSTAHL  
 TAPON ANTIRROBO

Q.TY n.1

