



**MODEL** KTM 990 SMT

**YEAR** 2009 -->

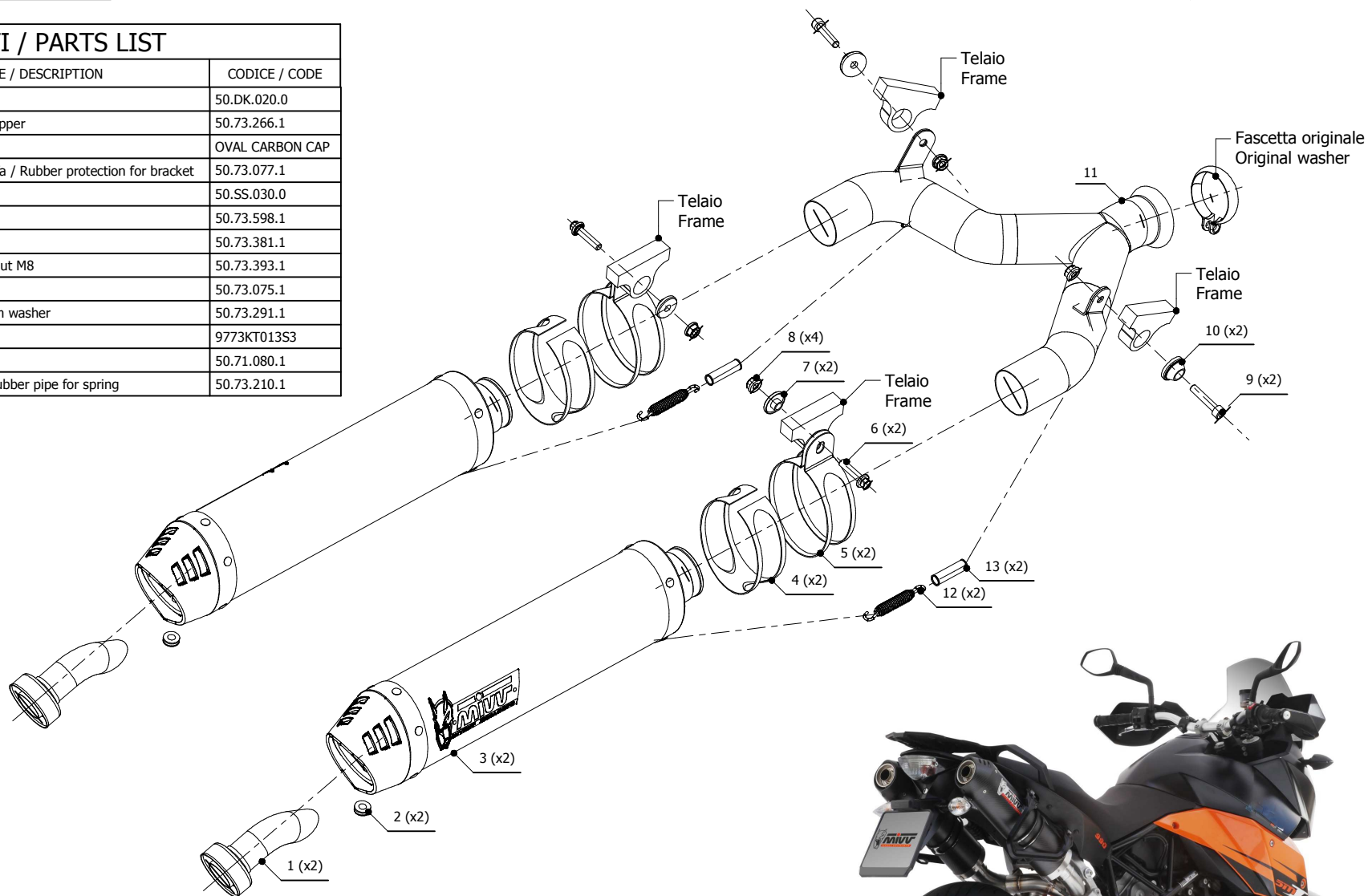
**LINE** SPORT

**MUFFLER** OVAL CARBON CAP

**SCHEMATIC**

**ELENCO PARTI / PARTS LIST**

#	QTÀ / QTY	DESCRIZIONE / DESCRIPTION	CODICE / CODE
1	2	DB killer / DB killer	50.DK.020.0
2	2	Tappo in gomma / Rubber stopper	50.73.266.1
3	2	Silenziatore / Muffler	OVAL CARBON CAP
4	2	Protezione in gomma per staffa / Rubber protection for bracket	50.73.077.1
5	2	Staffa / Bracket	50.SS.030.0
6	2	Vite M8x35 / Screw M8x35	50.73.598.1
7	2	Boccola / Bush	50.73.381.1
8	4	Dado M8 flangiato / Flanged nut M8	50.73.393.1
9	2	Vite M8x40 / Screw M8x40	50.73.075.1
10	2	Rondella alluminio / Aluminium washer	50.73.291.1
11	1	Tubo di raccordo / Link pipe	9773KT013S3
12	2	Molla lunga / Long spring	50.71.080.1
13	2	Tubo in gomma per molla / Rubber pipe for spring	50.73.210.1



**APPLICAZIONI / APPLICATIONS**

CODICE / CODE	TUBO / PIPE	SILENZIATORE / MUFFLER	FASCETTA / CLAMP
KT.013.L3C	INOX / ST.STEEL	CARBONIO (COPPA CARBONIO) / CARBON (CARBON CAP)	INOX / ST.STEEL
KT013.L4C	INOX / ST.STEEL	TITANIO (COPPA CARBONIO) / TITANIUM (CARBON CAP)	INOX / ST.STEEL